

Welfare Reform, Family Financial Well-Being, and Government Spending

Ron Haskins
Brookings Institution
Washington D.C.
June 12, 2018

Figure 1. Federal Spending on Benefits and Services for People with Low Income, by Program, 2008, 2012, and 2016

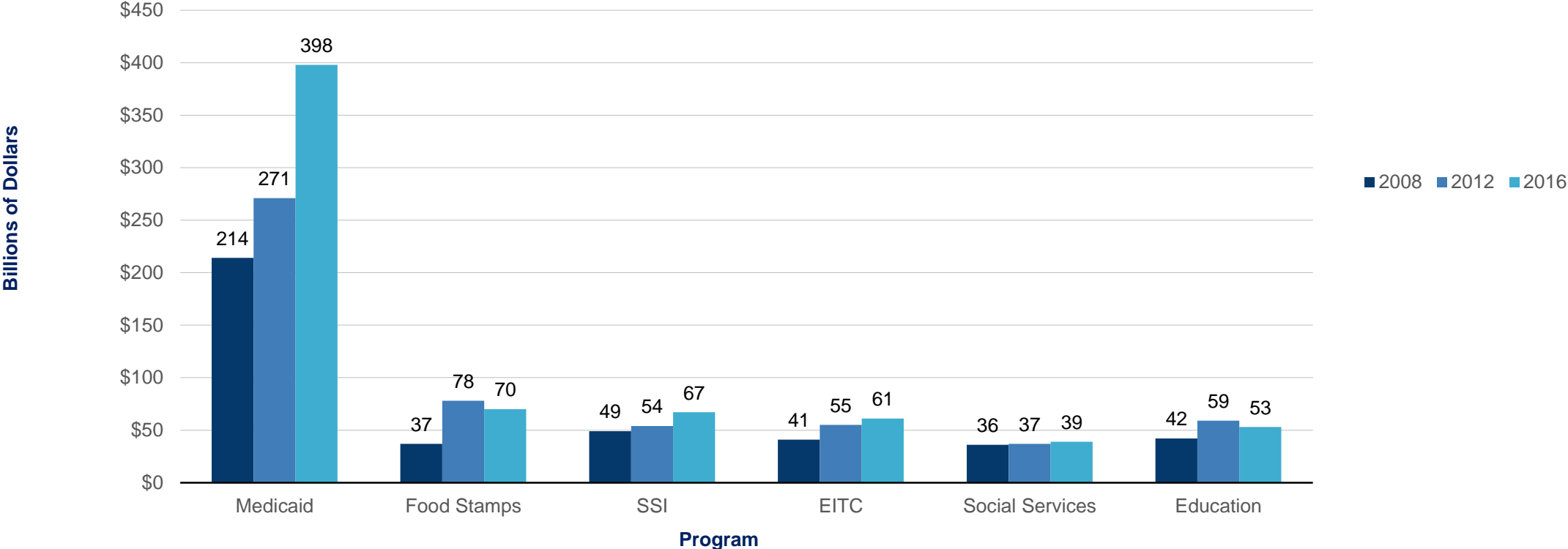
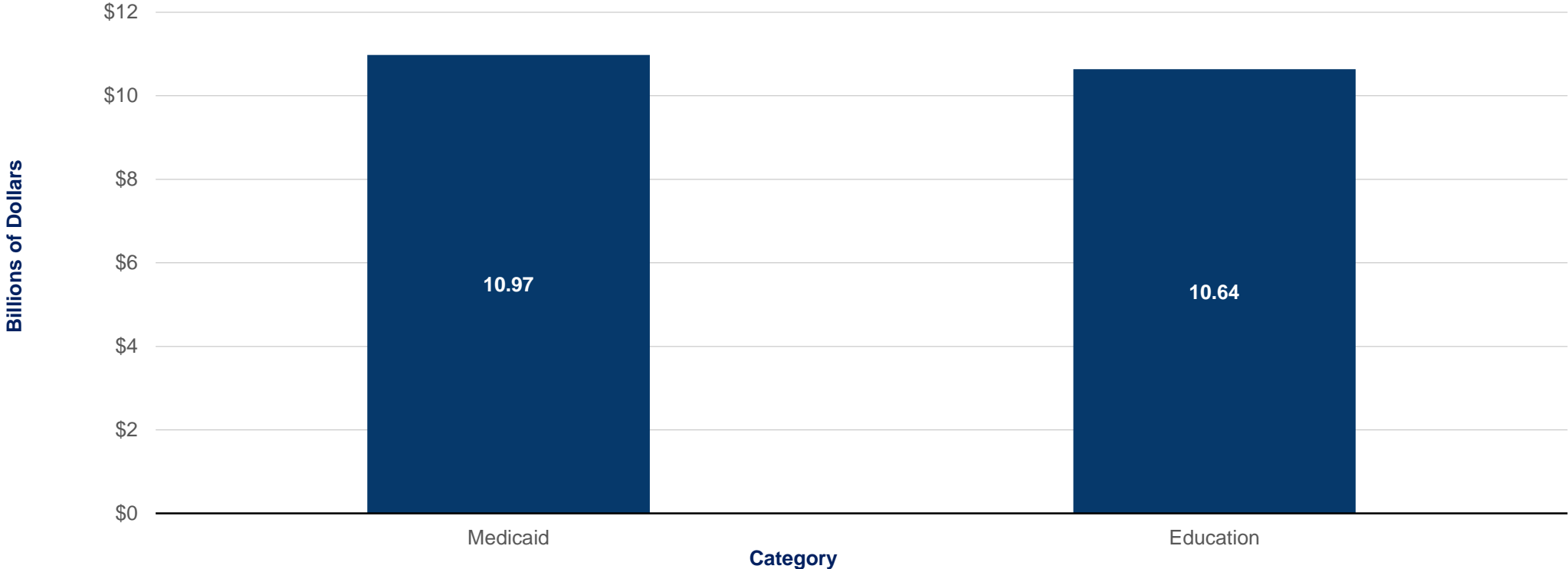
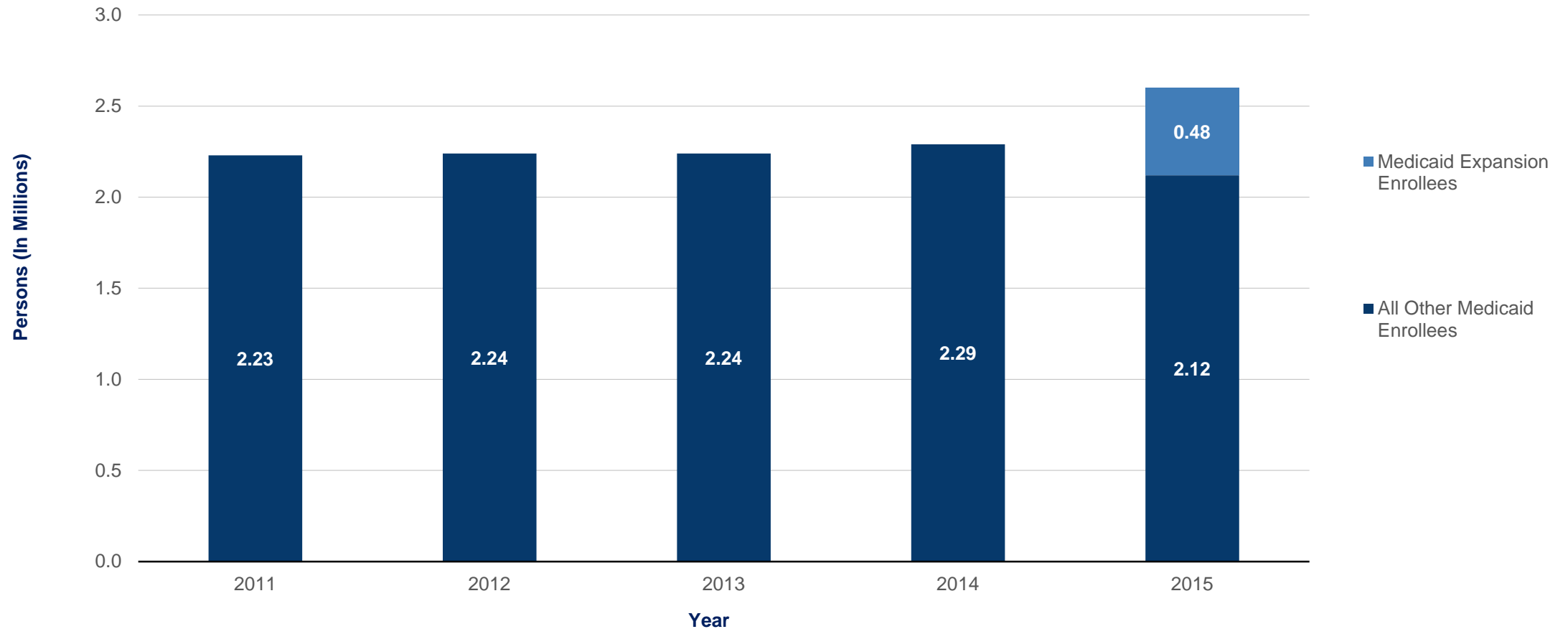


Figure 2. State Spending on Medicaid and Education in Pennsylvania, 2015



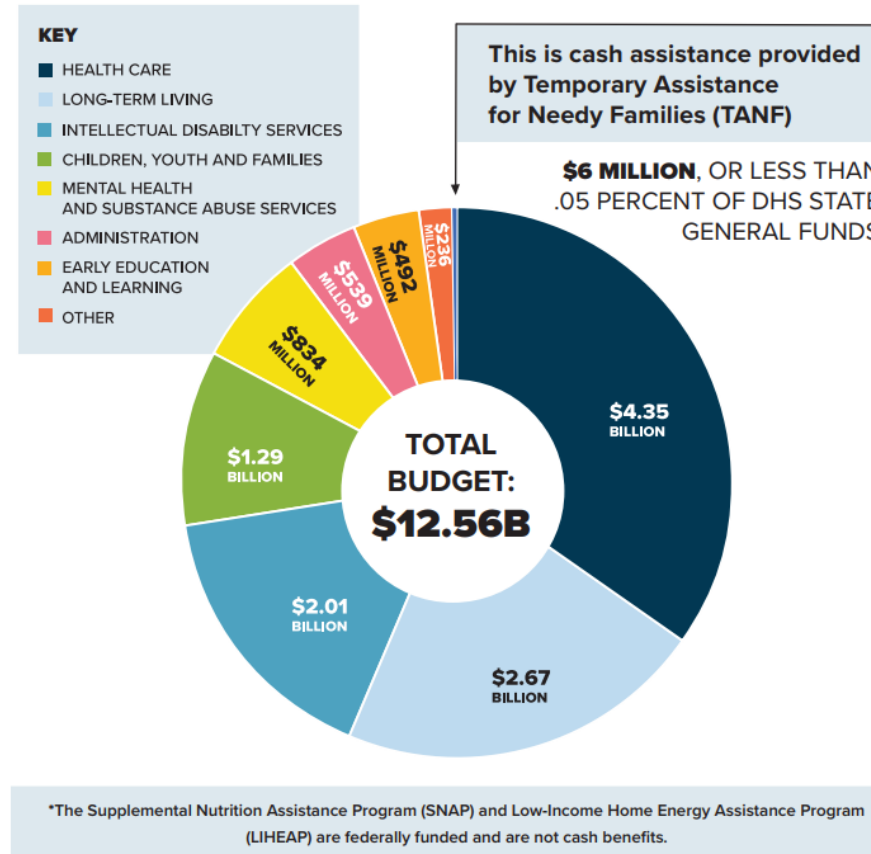
Source: Based on tabulations of direct general expenditures at the state level for Pennsylvania from the Annual Survey of State Government Finances, 2015. Medicaid data based on Federal and State Share of Medicaid Spending Table from the Kaiser Family Foundation FY 2016.
Notes: In 2015, Pennsylvania spent \$0 on Food Stamp benefits and \$0 on EITC. Medicaid data from Fiscal Year 2016.

Figure 3. Medicaid Enrollment, Average Monthly Count, CY 2011-2015



Source: *Medicaid Expansion Report*. (Pennsylvania Department of Human Services, 2017), Figure 8. Medicaid Enrollment by Calendar Year, Average Monthly Count in Millions. Available at http://www.dhs.pa.gov/cs/groups/webcontent/documents/document/c_257436.pdf.

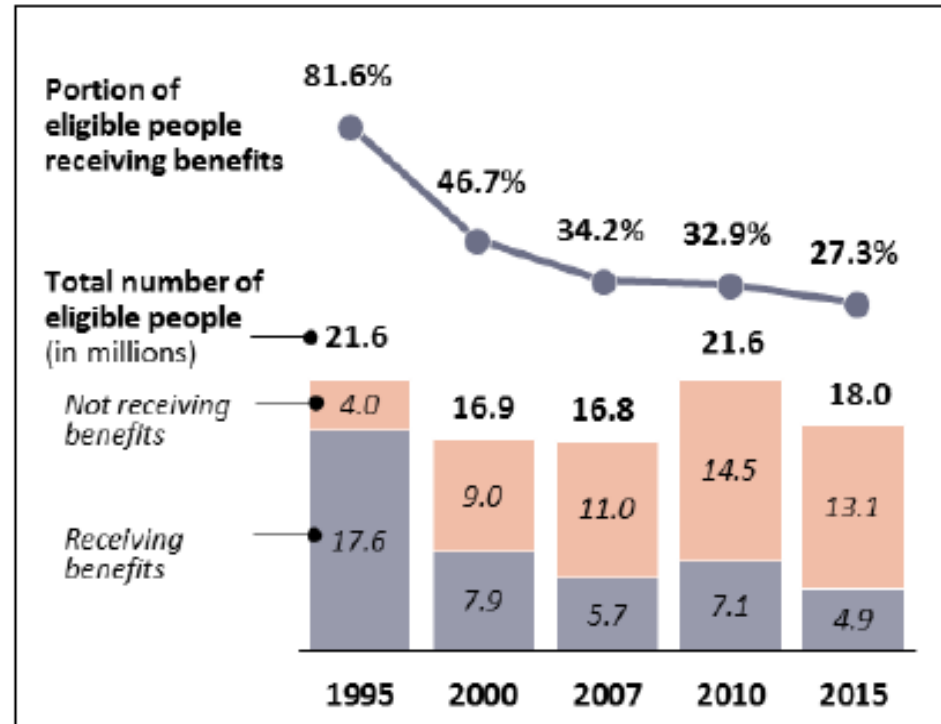
Figure 4. Pennsylvania Department of Human Services Budget



Numbers are from the Pennsylvania Department of Human Services
2018-19 General Fund Budget Request

Source: "The True Cost of Welfare." Pennsylvania Department of Human Services. Available at <http://www.dhs.pa.gov/publications/infographics/truecostofwelfare/>.

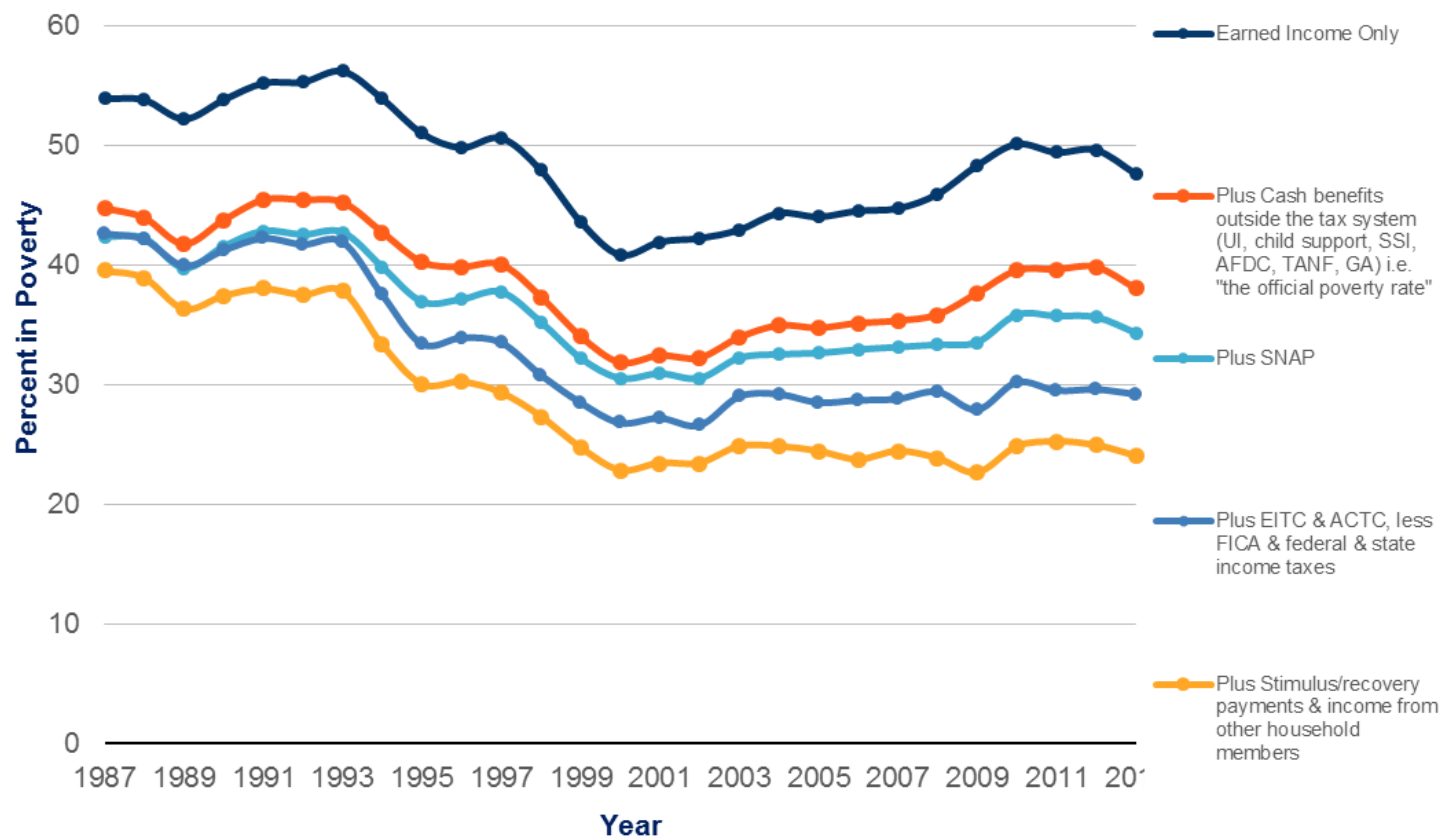
Figure 5. Number of People Eligible for and Receiving Cash Assistance, Selected Years



Source: Gene Falk, *Temporary Assistance for Needy Families: The Decline in the Cash Assistance Caseload*, CRS Report No. IF10889. (Washington, DC: Congressional Research Service, 2018).

Notes: Includes people in state-funded public assistance programs who are eligible for TANF, but excludes families receiving relatively small TANF-funded earnings supplements outside of regular TANF.

Figure 6. Effect of Earnings, Transfers, and Taxes on the Poverty Rate of Households Headed by Single Mothers, 1987-2013



Source: Thomas Gabe, *Welfare, Work, and Poverty Status of Female-Headed Families with Children: 1987-2013*, CRS Report No. R41917 (Washington, DC: Congressional Research Service, 2014), <https://fas.org/sgp/crs/misc/R41917.pdf>.
 Notes: Poverty status calculated by "Census Bureau family income poverty thresholds scaled for household (rather than family) size and composition." Abbreviations are as follows: Unemployment Insurance (UI), Supplemental Security Income (SSI), Aid to Families with Dependent Children (AFDC), Temporary Assistance for Needy Families (TANF), General Assistance (GA), Supplemental Nutrition Assistance (SNAP), Earned Income Tax Credit (EITC), Additional Child Tax Credit (ACTC), and Federal Insurance Contributions Act (FICA).